

AVAILABLE

# 1414-1422 Harbour Way South

RICHMOND, CA



## Now For Lease - Ford Point Mixed Use Development Light Industrial, Office/R&D, Retail, Live/Work



**±154,000 Sq. Ft. Leased**

**Location:** 1414-1422 Harbour Way South on the Bay just south of Interstate 580 Freeway  
**Available Space:** ±363,000 sq. ft. **DIVISIBLE to ±20,000 sq. ft.** with docks (East side) and **±10,000 sq. ft.** with grade level doors (West side); ±150,000 sq. ft. on 2nd floor (water views) accessible by freight & passenger elevators

See Building Plan on Reverse Side

**Amenities:**

- Fully remodeled & upgraded, including seismic & windows
- Ample parking (total site = ±25 acres)
- Natural & mechanical building ventilation

**Building Features:**

- 14'-18' clear & 100% sprinklered
- Dock & grade level loading
- High bay metal halide lights
- Natural Lighting
- All utilities
- Offices to suit
- High speed telecommunications
- Common area restrooms



**Available For Occupancy: Immediately**

For information, please contact our exclusive listing agents:

**NAIBT Commercial**  
Commercial Real Estate Services, Worldwide.

**Gary Fracchia**  
Vice President  
510-267-6042  
gfracchia@naibtcommercial.com

**Jeff Leenhouts**  
Partner  
510-267-6014  
jleenhouts@naibtcommercial.com

**Brian Collins**  
Senior Sales Associate  
510-267-6036  
bcollins@naibtcommercial.com

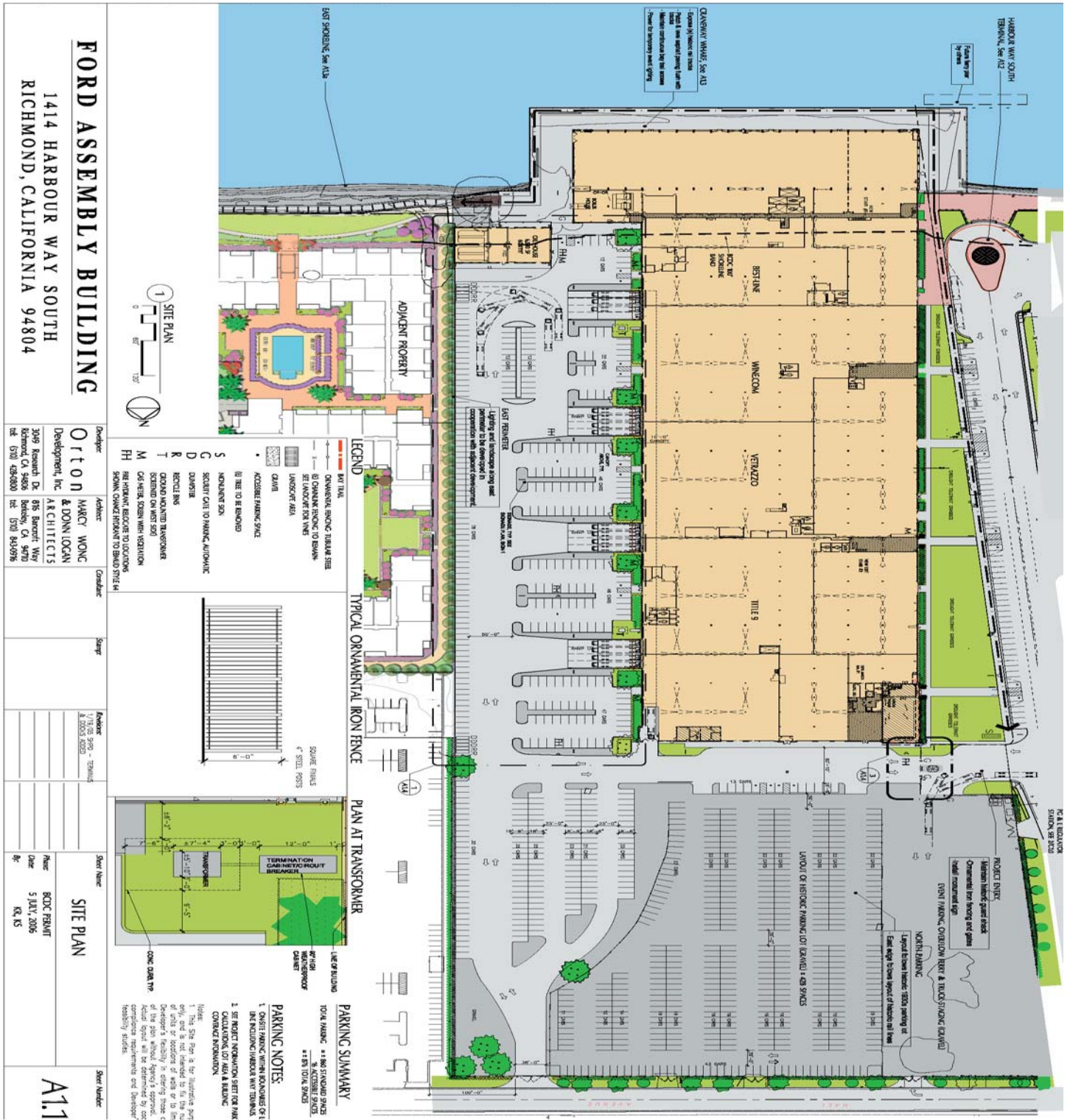
The information contained herein has been given to us by the owner of the property or other sources we deem reliable. We have no reason to doubt its accuracy, but we do not guarantee it. All information should be verified prior to purchase or lease.

555 12th Street Suite 1400 ■ Oakland CA 94607  
tel 510 465 8000 ■ fax 510 465 1350 ■ www.naibtcommercial.com

# 1414-1422 Harbour Way South

Richmond, CA

## Site Plan



### FORD ASSEMBLY BUILDING

1414 HARBOUR WAY SOUTH  
RICHMOND, CALIFORNIA 94804

**Developer:** Orton Development, Inc.  
3095 Research Dr.  
Richmond, CA 94805  
tel: (510) 4580800

**Architect:** HANCY WONG & DONN LOGAN ARCHITECTS  
815 Bancroft Way  
Berkeley, CA 94702  
tel: (510) 8430956

**Contractor:** [Blank]

**Stamp:** [Blank]

**Author:** [Blank]

**Scale:** [Blank]

**Sheet Name:** SITE PLAN

**Plot Name:** B001-FORDA1T

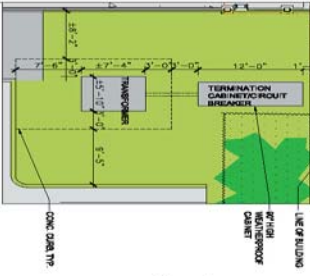
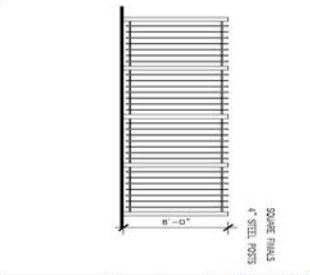
**Date:** 5 JULY 2006

**By:** KA, KS

**Sheet Number:** A1.1

**LEGEND**

- DRIVEWAY
- RAMP
- ASPH/CONC
- ASPH
- CONC
- GRAVEL
- ACCENT HAWKING SPACE
- MONUMENT SIGN
- SECRET CURB TO PARKING, AUTOMATIC
- DIAPHRAGM
- GROUND MOUNTED TRANSFORMER
- SCHEMATIC ON WEST SIDE
- CAFETERIA, STAIRS WITH VENTILATION
- REAR WALKWAY, ACCESS TO LOCATION
- SEMI-CIRCLE DRIVEWAY TO BUILDING #14



For information, please contact our exclusive listing agents:

**Gary Fracchia**  
Vice President  
510-267-6042  
gfracchia@naibtcommercial.com

**Jeff Leenhouts**  
Partner  
510-267-6014  
jleenhouts@naibtcommercial.com

**Brian Collins**  
Senior Sales Associate  
510-267-6036  
bcollins@naibtcommercial.com